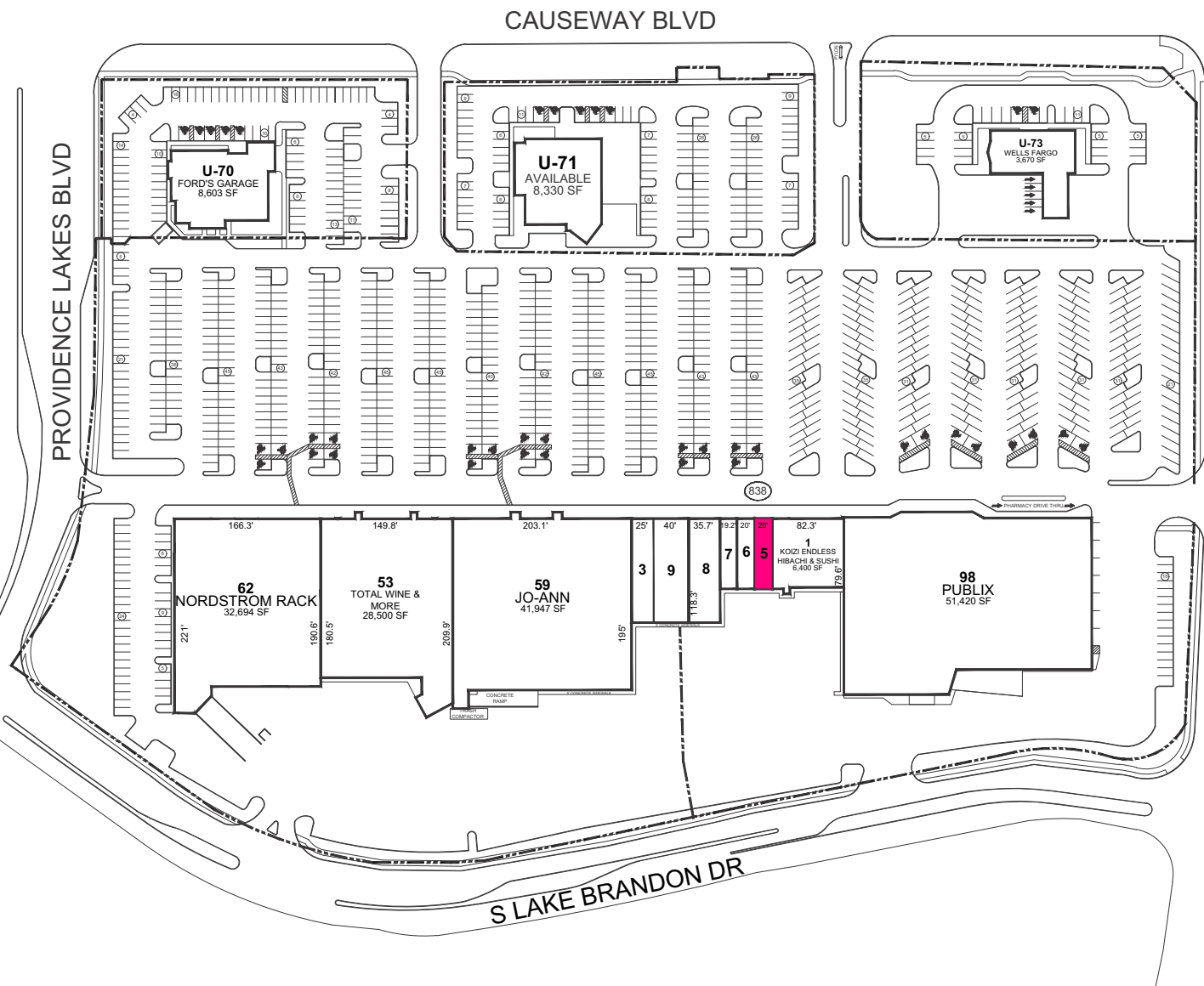


TENANT INDEX

1	KOIZI ENDLESS HIBACHI & SUSHI	6,400
3	ARIA NAIL BAR	2,975
5	AVAILABLE	1,600
6	LIN'S GARDEN	1,600
7	FANTASTIC SAM'S	1,600
8	CATHERINE'S	4,200
9	LANE BRYANT	4,760
53	TOTAL WINE & MORE	28,500
59	JO-ANN	41,947
62	NORDSTROM RACK	32,694
98	PUBLIX	51,420
U-70	FORD'S GARAGE	8,603
U-73	WELLS FARGO	3,670



AVAILABLE



LAKE BRANDON PLAZA

11345 - 11381 Causeway Blvd
BRANDON, FL 33511

Latitude:27.9219 , Longitude:-82.3250



THIS DRAWING IS FOR GENERAL INFORMATION PURPOSES ONLY AND IS INTENDED FOR USE AS A REFERENCE ONLY. THIS DRAWING IS NOT INTENDED TO REPRESENT THE ACTUAL SIZE, DIMENSIONS, OWNERSHIP, OR TENANCY OF THE MATTERS DEPICTED. ANY AND ALL FEATURES AND INFORMATION ARE FOR ILLUSTRATIVE PURPOSES ONLY, AND ARE SUBJECT TO CHANGE WITHOUT NOTICE.

3300 Enterprise Parkway, Beachwood, OH 44122
Fax 216 . 755 . 1500 Phone 216 . 755 . 5500